



Downtown Wayfinding Program

City of Longmont

100% DESIGN INTENT | LON1693 | MAY 13, 2023

COLORS	PRINT	PAINT ¹	VINYL FILMS
C1 NAVY BLUE	Pantone 540 C ²	MP13702 Beale Street Blues	Translucent Graphic Films 540 C Pantone match
C2 COPPER	Pantone 163 C	MP00181 Peachy Pink	Translucent Graphic Films 163 C custom match Pantone
C3 MEDIUM BLUE	Pantone 653 C	MP09460 Blue Collar	Translucent Graphic Films 653 C custom match Pantone
C5 SILVER	-	MP18133 Grey Steel Metallic	3M 180-220 Light Silver Metallic Graphic Film
C6 WHITE	-	SOA202SP Natural White (Matthews Factory Mix)	3M 7725 Opaque Matte White 3M 3430 Reflective White (Engineer Grade Prismatic)
C7 DARK GREY	-	MP07102 Deep River	-

¹ Matthews Paint (satin finish unless specified otherwise).

² Certain sign faces or letters require retro-reflective graphics & may need to be printed on 3M Engineer Grade Prismatic Reflective Sheeting (3430) to achieve proper color match (see sign type drawings). DOT/MUTCD requirements must be met.

BRAND GRAPHICS

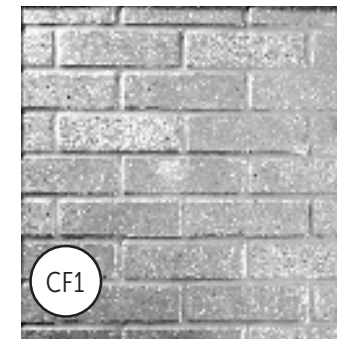


City Graphic Pattern
Designer to provide final artwork



Downtown Graphic Pattern
Designer to provide final artwork

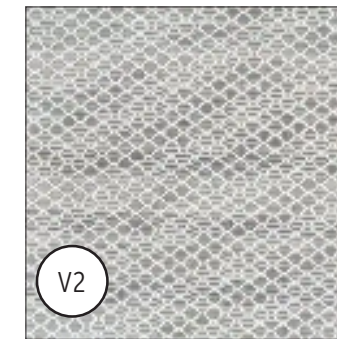
CONCRETE / SPECIAL MATERIALS



Stone Base
- Stone Veneer spec TBD by City

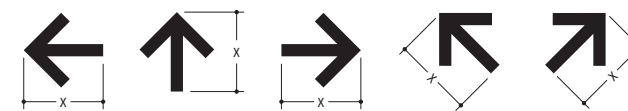


Skyline Design Laminated Glass
Exterior Grade Tempered Glass
w/ EVA printed inner layer
Color: Clear, Exterior



3M 3930 HIP Vinyl
(High Intensity Prismatic)
With 3M 1170 Overlamine

GRAPHICS



Arrow
Designer to provide final artwork, X dimension should remain the same when rotating arrow

FONTS

Fonts must be purchased or obtained by sign fabricator.

T1 Interstate Regular

Aa Bb Cc Dd Ee Ff Gg Hh Ii Jj Kk Ll Mm Nn Oo
Pp Qq Rr Ss Tt Uu Vv Ww Xx Yy Zz
1 2 3 4 5 6 7 8 9 0

T2 Interstate Bold

Aa Bb Cc Dd Ee Ff Gg Hh Ii Jj Kk Ll Mm Nn
Oo Pp Qq Rr Ss Tt Uu Vv Ww Xx Yy Zz
1 2 3 4 5 6 7 8 9 0

downtown.
LONGMONT

creative
DISTRICT

crea
tive
DISTRICT

Logos
Downtown to provide final artwork

date 05.13.23

contact

project LON1693

phase 100% Design Intent revision 1

NOT FOR CONSTRUCTION
These drawings and notes are for the sole purpose of expressing visual design intent and are not intended for actual fabrication purposes. Sign Contractor accepts total responsibility for final material selection, fabrication and installation methods. Electronic files are not construction documents and cannot be relied upon as identical to construction documents because of changes or errors induced by translation, transmission, or alterations while under the control of others. Use of information contained in the electronic files is at the user's sole risk and without liability to Design Professional and its consultants. Refer to provided performance specifications for details on designer expectations of Fabricator and fabrication process.
Copyright © Guide Studio, Inc. All rights reserved.

sheet

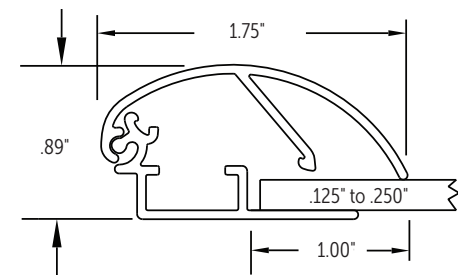
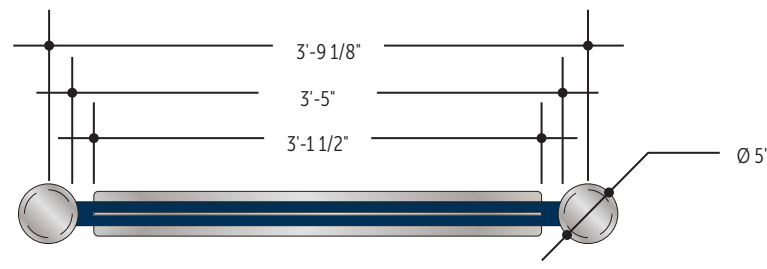
Guide
13110 Shaker Square, Suite 101
Cleveland, Ohio 44120
guidestudio.com

pm C. Fromet
design K. Fromet

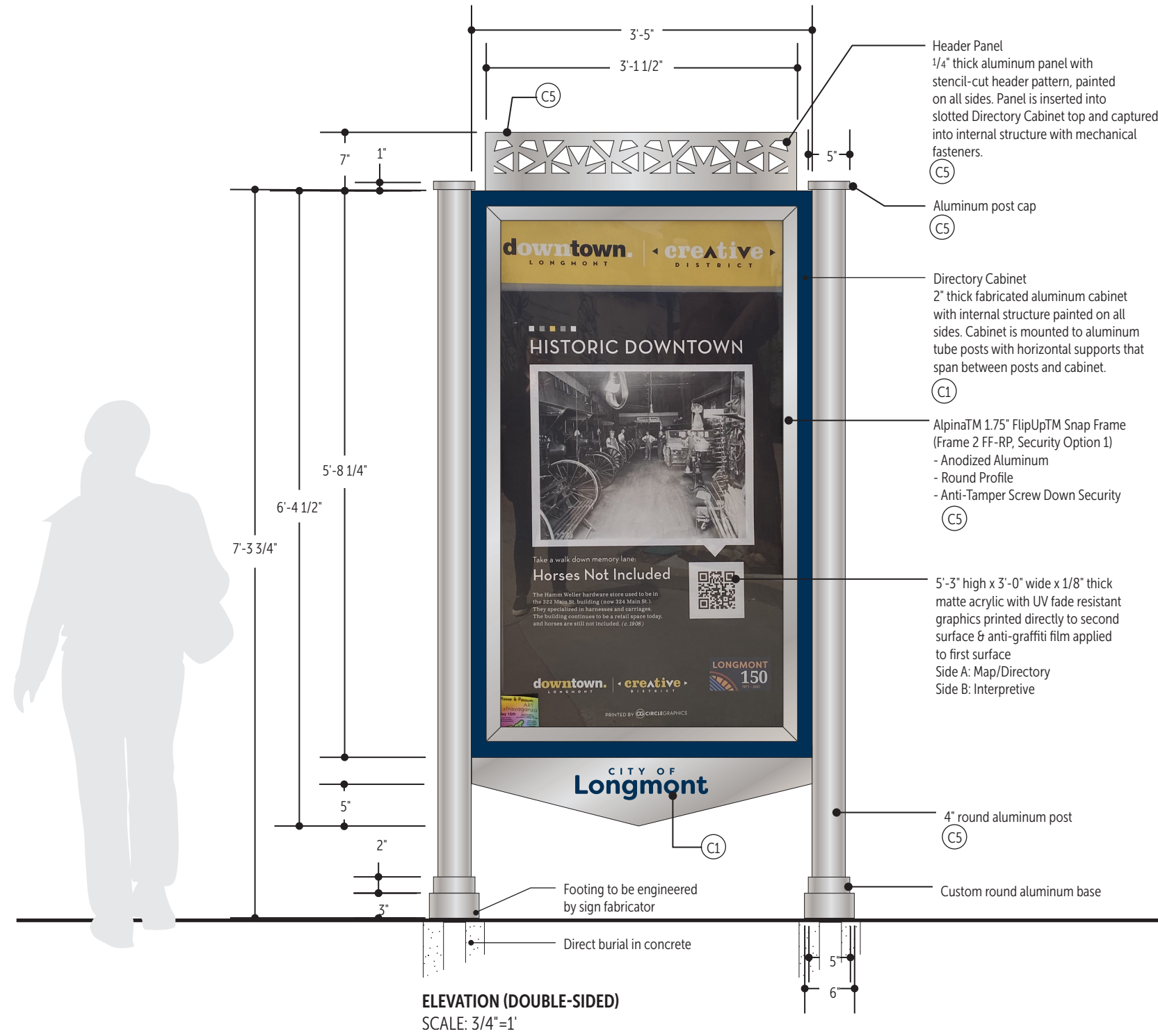
City of Longmont
Downtown Wayfinding Program

Color, Materials, Graphics
Program Specifications

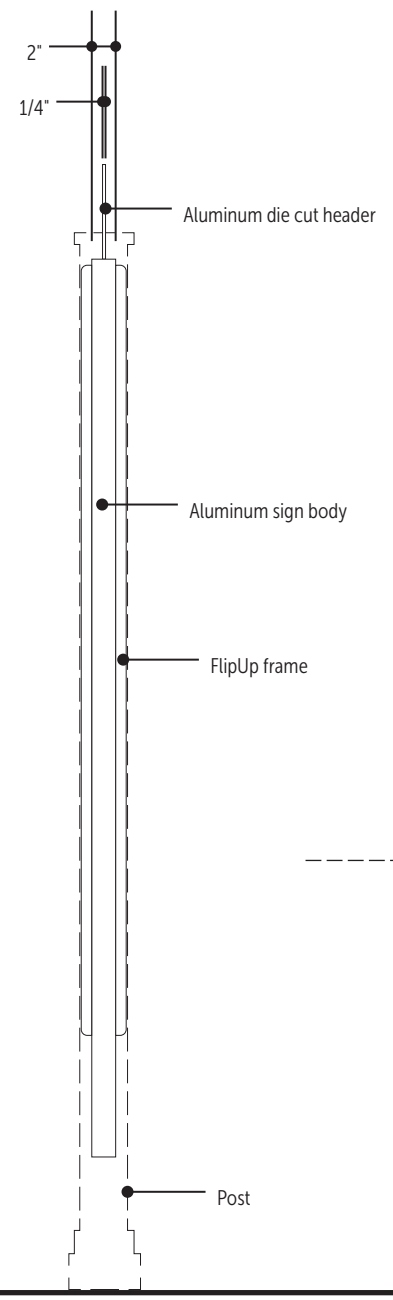
||



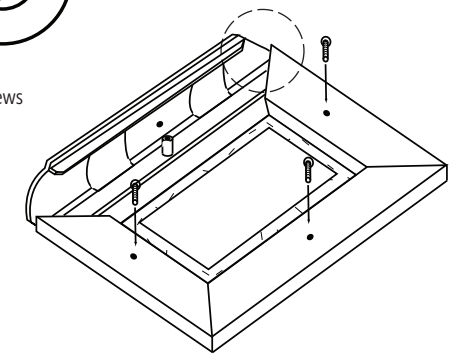
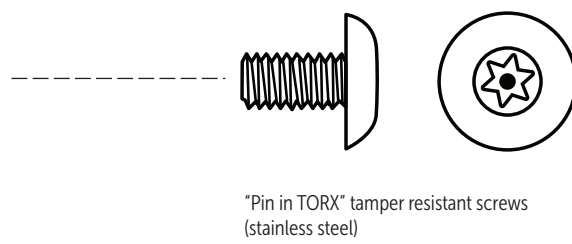
FRAME PROFILE
NOT TO SCALE



ELEVATION (DOUBLE-SIDED)
SCALE: 3/4"=1'



SECTION VIEW
SCALE: 3/4"=1'



SECURITY DETAIL
NOT TO SCALE

GENERAL NOTES

1. Sign contractor shall be responsible for design and engineering of supports, anchors and miscellaneous steel or metal required for installation.
2. The sign contractor's structural engineer shall be licensed in the State of Colorado and certify all connections and support details.
3. Isolate dissimilar materials as required.
4. Field dimensions shall be taken by the sign contractor prior to preparation of shop drawings and fabrication wherepossible. It is the responsibility of the sign contractor to site verify all sign locations for accuracy, fit, and potential obstacles. Sign contractor shall notify appropriate person(s) of any issues, discrepancies and potential obstacles per the attached Performance Specifications, contract or specified communication process.
5. It is the responsibility of the sign contractor to contact appropriate organizations to verify locations of underground utilities.
6. Sign contractor must obtain all permits and field inspection approvals necessary to complete work per City requirements. All sign locations need to be located and staked by sign contractor and approved by the City prior to installation.
7. Masonry dimensions are approximate; sign contractor to verify and adjust as needed. Final dimensions must appear on shop drawings for review and approval.
8. Sign contractor must clean and seal masonry to prevent moisture, discoloration and other defects due to weather and environmental conditions.
9. Sign contractor must submit brick, stone, and mortar samples for review and approval.
10. Sign contractor shall follow any additional requirements presented in the attached Performance Specifications and Design Intent Documents.
11. General: All painted surfaces to receive anti-graffitti UV clear coat protectant.

<p>date 05.13.23</p> <p>Guide 13110 Shaker Square, Suite 101 Cleveland, Ohio 44120 guidestudio.com</p>	<p>contact</p> <p>pm C. Fromet design K. Fromet</p>	<p>project LON1693</p> <p>City of Longmont Downtown Wayfinding Program</p>	<p>phase 100% Design Intent revision 0</p> <p>Pedestrian Kiosk - Large Sign Type PK1</p>	<p>NOT FOR CONSTRUCTION These drawings and notes are for the sole purpose of expressing visual design intent and are not intended for actual fabrication purposes. Sign Contractor accepts total responsibility for final material selection, fabrication and installation methods. Electronic files are not construction documents and cannot be relied upon as identical to construction documents because of changes or errors induced by translation, transmission, or alterations while under the control of others. Use of information contained in the electronic files is at the user's sole risk and without liability to Design Professional and its consultants. Refer to provided performance specifications for details on designer expectations of Fabricator and fabrication process. Copyright © Guide Studio, Inc. All rights reserved.</p>	<p>sheet</p>
---	---	---	---	---	--------------

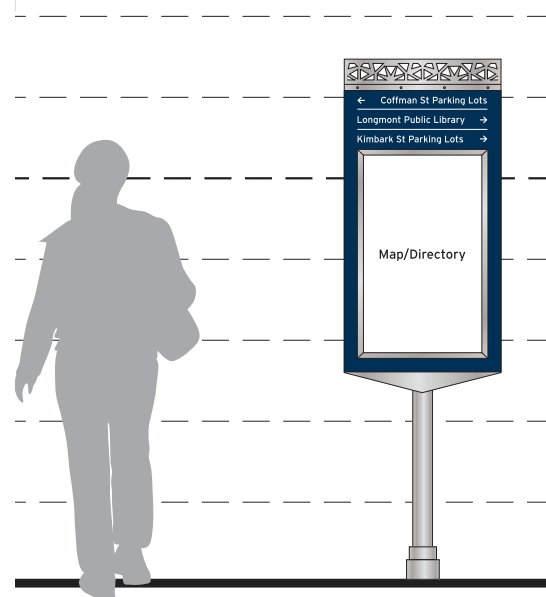
Existing Kiosks



There are several large kiosks that are already installed downtown. Based on the fabricator drawings, these kiosks can be updated rather than removed.



Changeable panels should be used to announce events, promote downtown features, etc.



New directional/directory kiosks have been designed to support wayfinding. The existing kiosks are not oriented properly to be used for orientation and wayfinding.



Recommend using the Downtown Longmont brand with blue and silver used on the downtown sign program.



The old Downtown Longmont logo plaque can stay - or - a new metal plaque (silver) can be applied on top.