

EXTERIOR SIGNAGE PRELIMINARY CONCEPTS

PROPOSAL OF EXTERIOR SIGNAGE
350 TERRY ST. LONGMONT, CO 80501
CREATIVE & DESIGN DIRECTION

PREPARED FOR YOUR CONSIDERATION BY LONGTUCKY SPIRITS

APRIL 7, 2017





CONCEPT V.1

ALL

MID RANGE, HIGH QUALITY

- AWNINGS, ANGLED W/ CLOSED ENDS
- DOUBLE SIDED PROJECTED SIGN (LOGO) W/ (X2) GOOSE-NECK UP-LIGHTING
- REMOVABLE WALL MURAL (TEMP. 6MO - 2 YRS), HEAT REMOVABLE
- WALL SIGN (ADDRESS) BLACK 3MM PVC W/ ALUM LETTERING



CONCEPT V.1 NORTH FACE

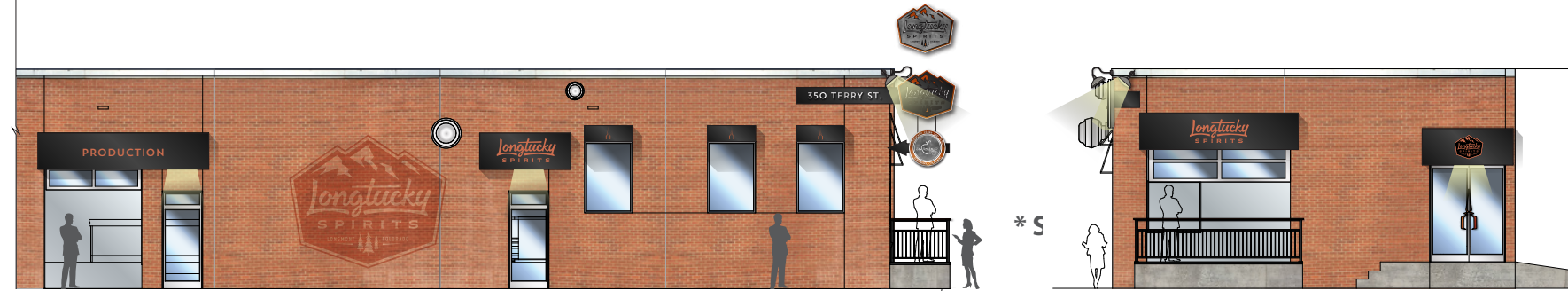
MID RANGE, HIGH QUALITY

- AWNINGS, ANGLED W/ CLOSED ENDS
- DOUBLE SIDED PROJECTED SIGN (LOGO) W/ (X2) GOOSE-NECK UP-LIGHTING
- WALL SIGN (ADDRESS) ALUM LETTERS ON BLACK PVC

DOUBLE SIDED PROJECTED SIGN

ALUM LETTERS ON PVC

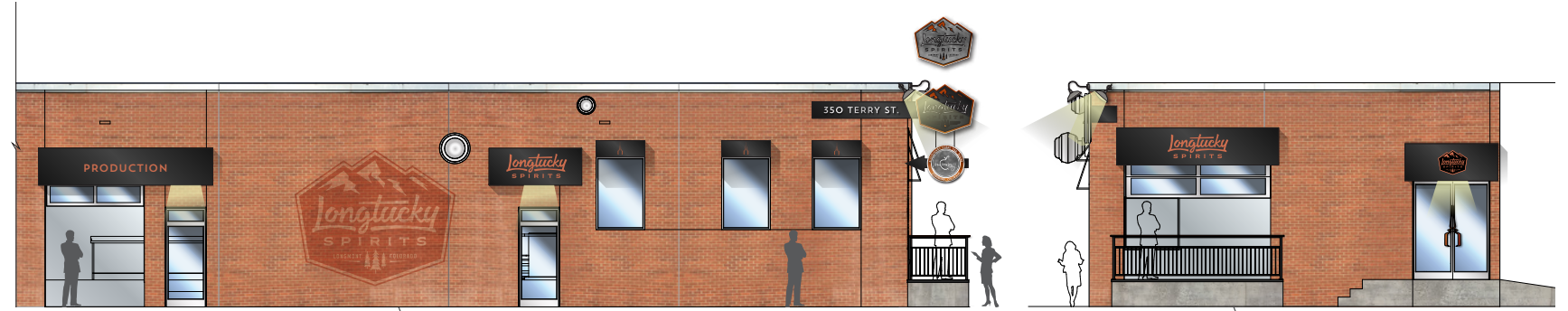
(X2) GOOSE-NECK UP-LIGHTING



CONCEPT V.1 EAST FACE PT 1

MID RANGE, HIGH QUALITY

- AWNINGS, ANGLED W/ CLOSED ENDS
- REMOVABLE WALL SIGN (TEMP. 6MO - 2 YRS), HEAT REMOVABLE



48" X 16" X 12" "MOCK" AWNINGS

3M™ SCOTCHCAL™ GRAPHIC FILM FOR TEXTURED SURFACES IJ8624

PRODUCTION

Longtucky
SPIRITS

171"

36"

36"

91"

11'-1 1/2"

120"

120"

13'-2 1/4"

CONCEPT V.1 EAST FACE PT 1

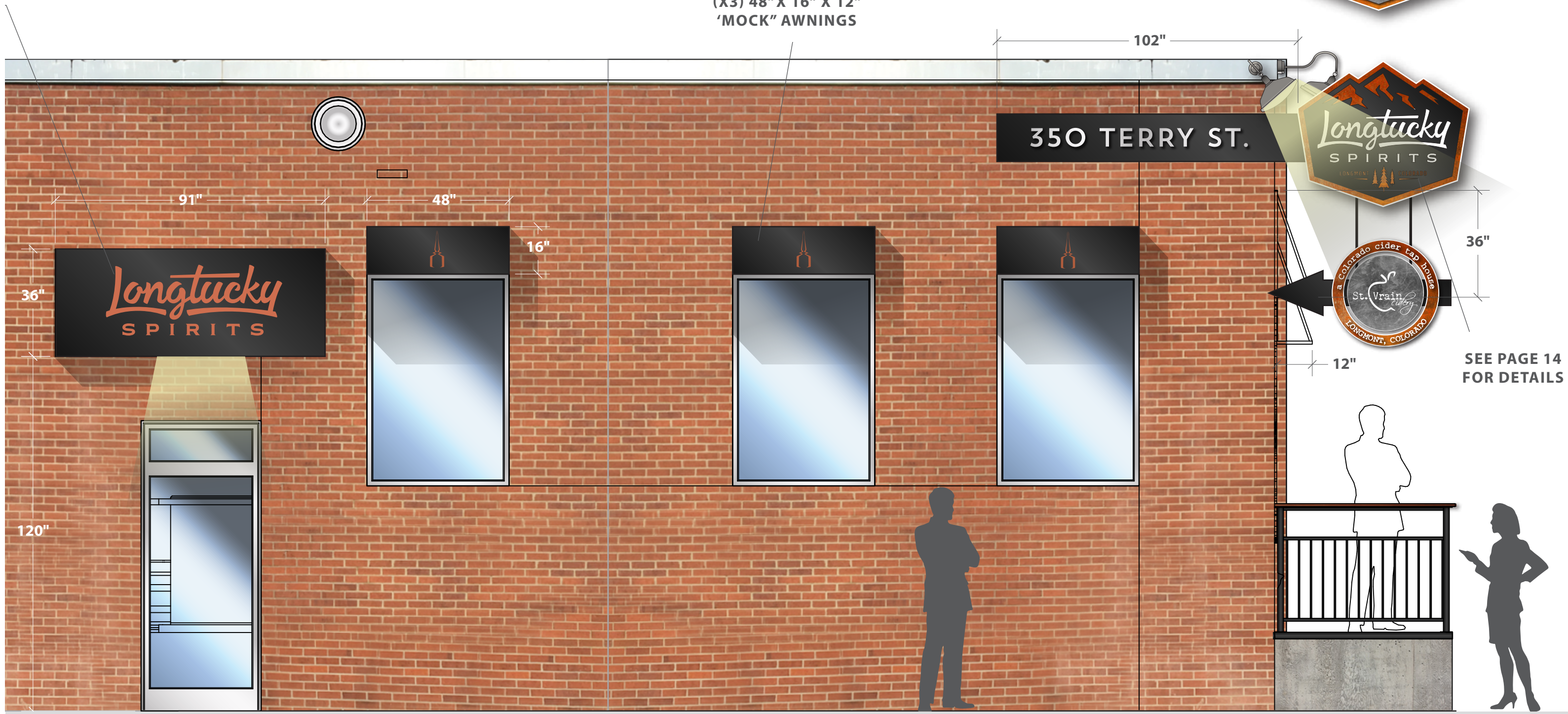
MID RANGE, HIGH QUALITY

- AWNINGS, ANGLED W/ CLOSED ENDS
- DOUBLE SIDED PROJECTED SIGN (LOGO) W/ (X2) GOOSE-NECK UP-LIGHTING
- WALL SIGN (ADDRESS) : ALUM LETTERS ON BLACK PVC

ALTERNATE
VERSION

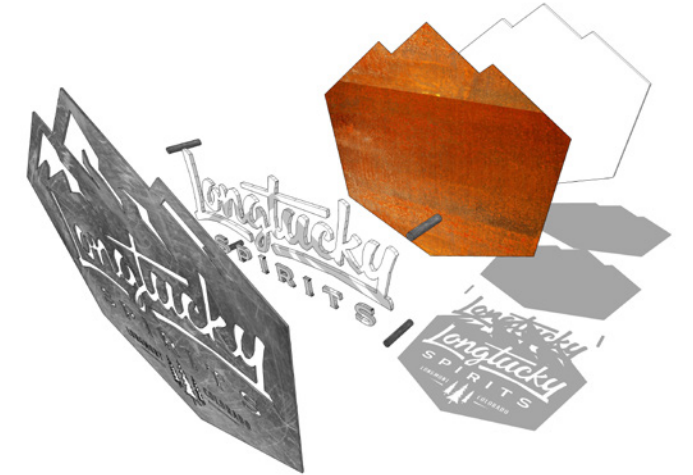


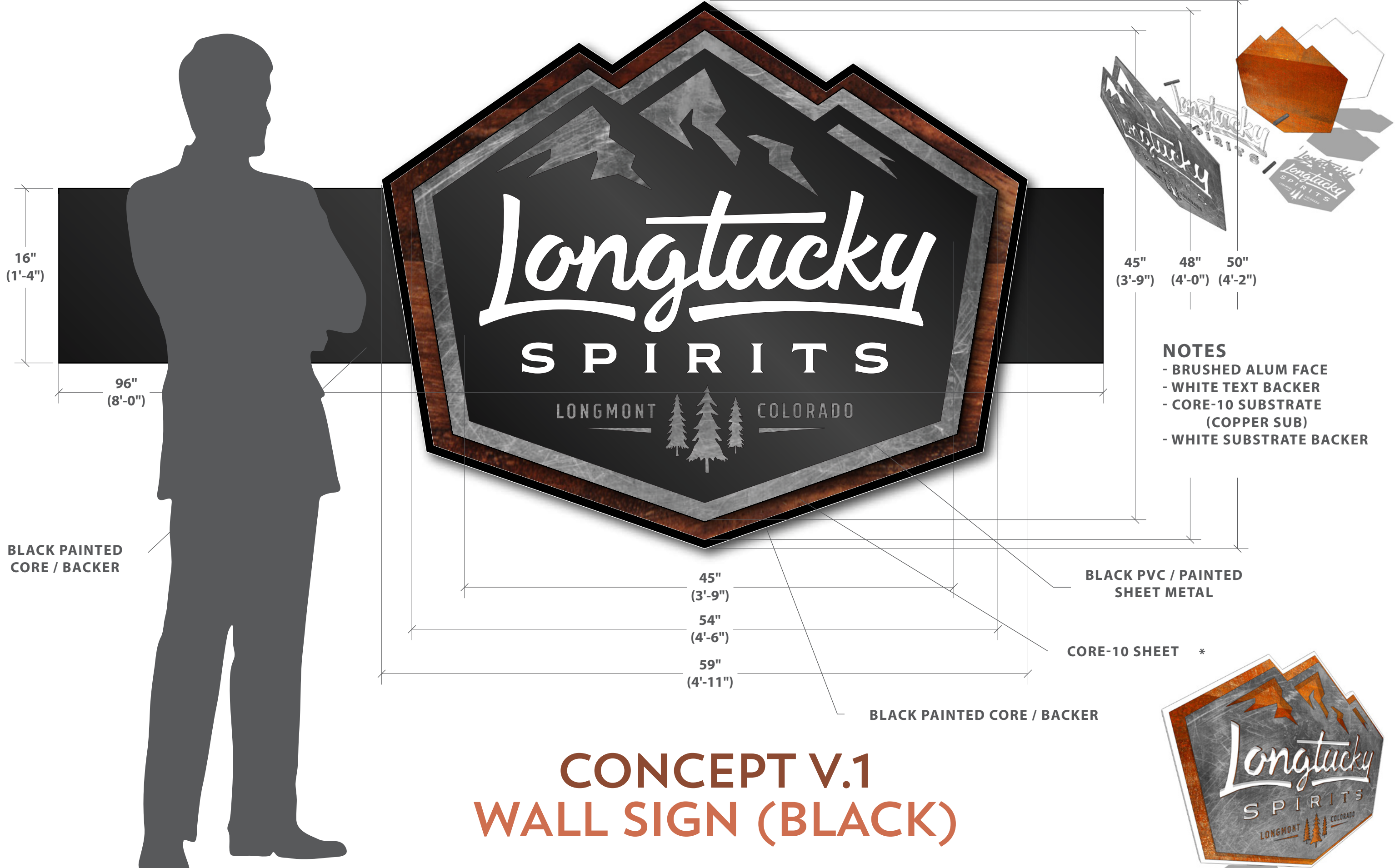
(X3) 48" X 16" X 12"
'MOCK' AWNINGS



CONCEPT V.1 CORNER PERSP

MID RANGE, HIGH QUALITY
- ANGLED AWNINGS, CLOSED ENDS (NOT SHOWN)





16"
(1'-4")

96"
(8'-0")

45" (3'-9") 48" (4'-0") 50" (4'-2")

- NOTES**
- BRUSHED ALUM FACE
 - WHITE TEXT BACKER
 - CORE-10 SUBSTRATE (COPPER SUB)
 - WHITE SUBSTRATE BACKER

BLACK PAINTED CORE / BACKER

BLACK PVC / PAINTED SHEET METAL

CORE-10 SHEET *

BLACK PAINTED CORE / BACKER

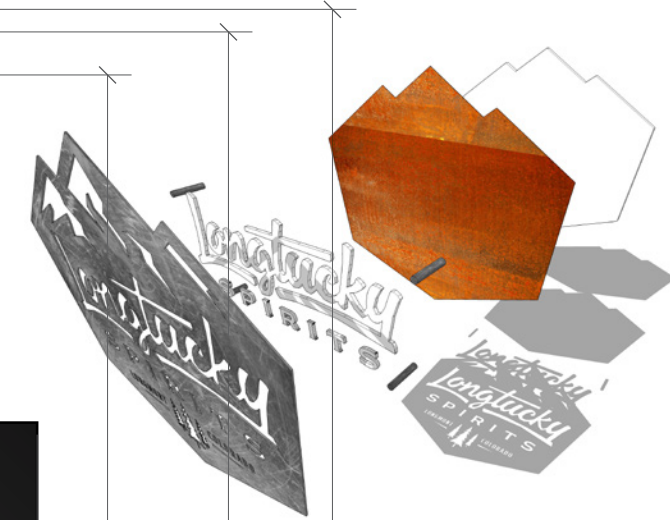
CONCEPT V.1 WALL SIGN (BLACK)



16"
(1'-4")

96"
(8'-0")

BLACK PAINTED
CORE / BACKER



45" (3'-9") 48" (4'-0") 50" (4'-2")

- NOTES**
- BRUSHED ALUM FACE
 - WHITE TEXT BACKER
 - CORE-10 SUBSTRATE (COPPER SUB)
 - WHITE SUBSTRATE BACKER

STAINLESS / SHEET METAL / BRUSHED ALUM

CORE-10 SHEET *

WHITE PAINTED CORE / BACKER

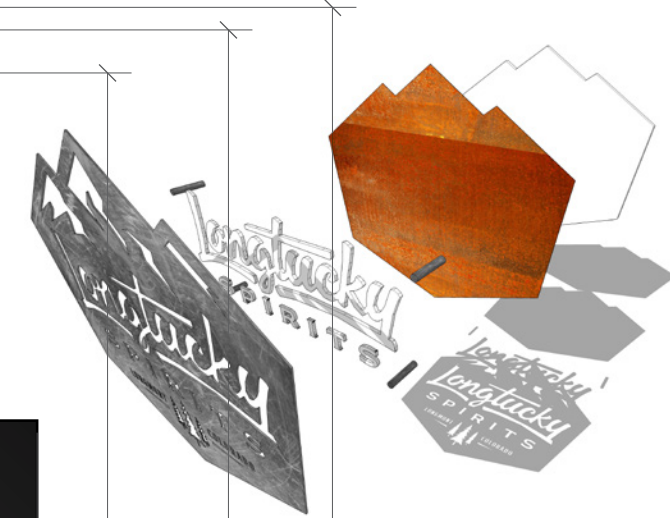
CONCEPT V.2 WALL SIGN (BRUSHED)



16"
(1'-4")

96"
(8'-0")

BLACK PAINTED
CORE / BACKER



45" (3'-9") 48" (4'-0") 50" (4'-2")

- NOTES**
- BRUSHED ALUM FACE
 - WHITE TEXT BACKER
 - CORE-10 SUBSTRATE (COPPER SUB)
 - WHITE SUBSTRATE BACKER

45"
(3'-9")

54"
(4'-6")

59"
(4'-11")

CORE-10 SHEET

BLACK PVC / PAINTED
SHEET METAL

BLACK PAINTED CORE / BACKER

CONCEPT V.3 WALL SIGN (COPPER)



3M™ SCOTCHCAL™ GRAPHIC FILM FOR TEXTURED SURFACES IJ8624



21,237" sq in

- 21,237" sq in
- 1,772" sq in
- 599" sq in
- 738" sq in
- 1,313" sq in
- 60" sq in
- 60" sq in
- 60" sq in

25,839" sq in / 144

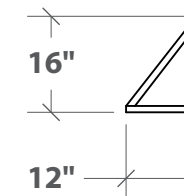
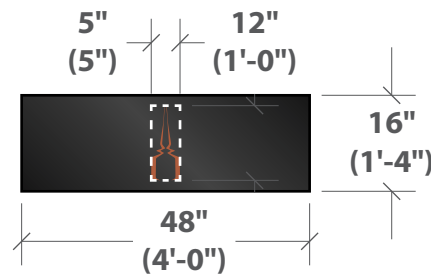
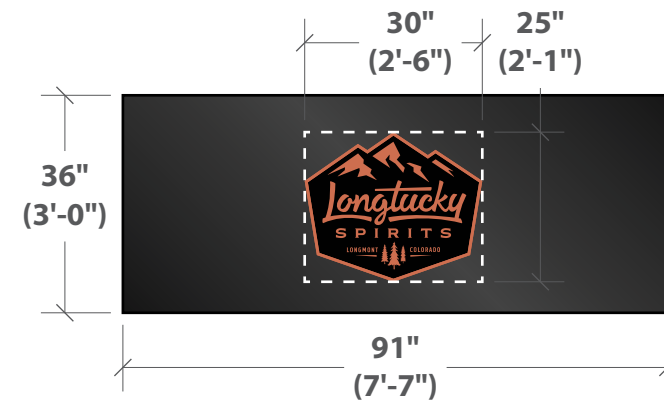
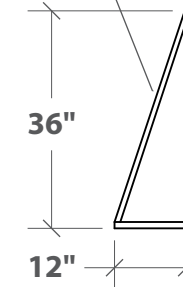
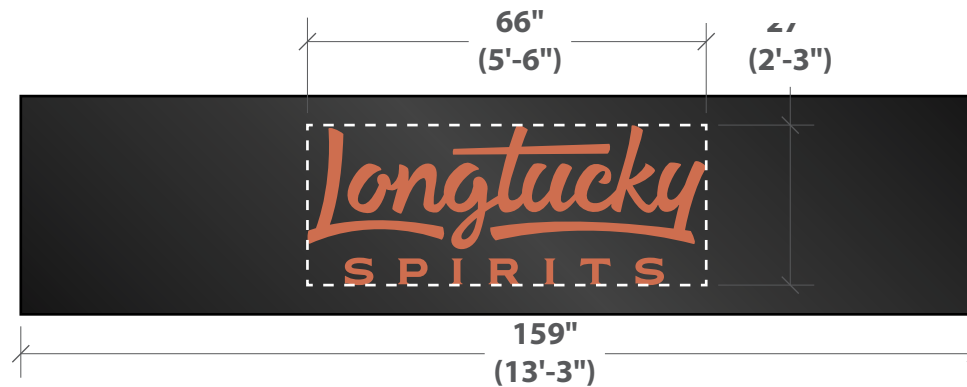
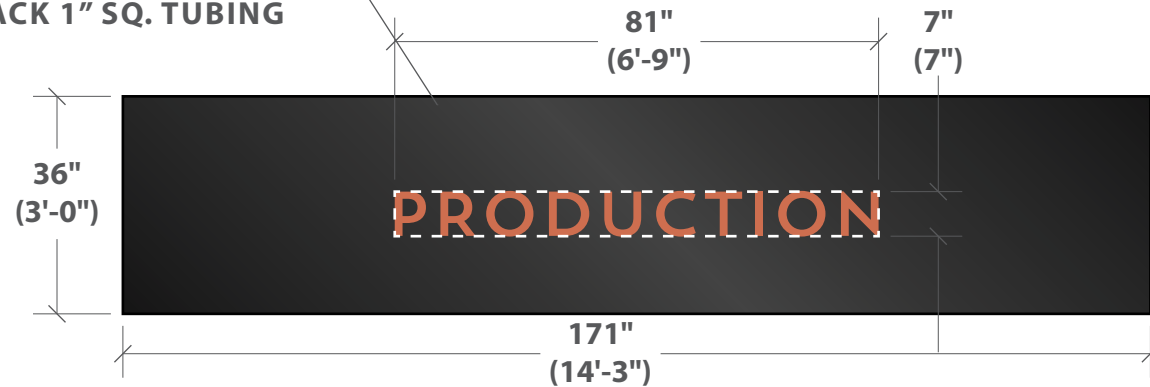
179 sq ft

PRINTED CANVAS OVER BLACK 1" SQ. TUBING

599" sq in

1,772" sq

BLACK 1" SQ. TUBING



738" sq in

PRINTED CANVAS OVER BLACK 1" SQ. TUBING

(x3) 60" sq in

